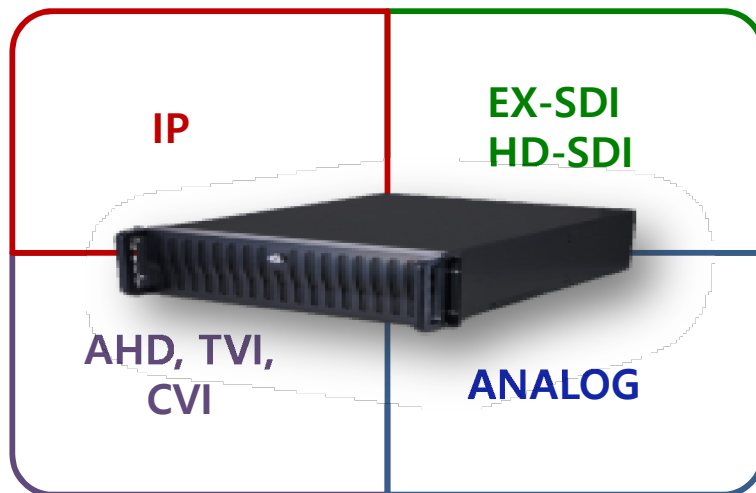


SECURUS SURVEILLANCE ALL HYBRID

NVR



SECURUS SURVEILLANCE ALL HYBRID NVR

Securus Smart NVR

- ✓ **The World's First All Hybrid PC NVR**
EX-SDI+HD-SDI+HD ANALOG+IP
- ✓ **Salable and flexible software**
for various application
- ✓ **H.264 Video Format**
- ✓ **OnVIF Profile S Conformance Support**
- ✓ **64CH recording, monitoring, streaming**
- ✓ **Event Log & Search : System error, Motion, Event**
- ✓ **Image DB Backup : Schedule, Real time**
- ✓ **Dual Streaming : Main Stream, Extra Sub-Stream**



Securus Smart Client

- ✓ **Multiple server access is possible (Max.100)**
- ✓ **Detail information on a single screen**
(Event, Video, Information etc.)
- ✓ **User convenience panel set up**
- ✓ **Real time event monitoring**
- ✓ **Map pop up for event and video pop up**
- ✓ **Spot monitor for event**
- ✓ **Two-Way audio**
- ✓ **Event Log and Search**
- ✓ **Automatic re-connection to server**



Securus Smart Mobile

- ✓ **Android, i-phone**
- ✓ **Live monitoring, PTZ control**
- ✓ **Multiple server registration**



'SECURUS' All Hybrid NVR Specification



**EX-SDI2.0 HD-SDI
AHD TVI CVI ANALOG**

Feature

- ✓ It is compatible with any existing cameras
- ✓ High Performance H.264 H/W Encoding DVR board
- ✓ Scalable and flexible software for various application
- ✓ SDK is available for 3rd party integration

Classification	Sub-category		VHD-1204EH	VHD-2408EH	VHD-4816EH	
Video	Input	Total	8CH	12CH	20CH	
		IP	4CH License for one Card (Extensible to Max.64CH-optional)			
		Card	4CH(BNC)	8CH(BNC)	16CH(BNC)	
	Output Resolution	Signal Type	HD-SDI, EX-SDI, AHD, CVI, TVI, CVBS			
		Monitor	VGA, DVI, HDMI(Optional) / 1920x1080			
		Spot	1x HDMI / 2x CVBS	-	-	
Compression		H.264				
Audio	Input		4CH	8CH	16CH	
	Compression		ADPCM			
	Output		PC Sound Card			
Live	Resolution (1080p)	IP	120fps			
		Card	120fps	240fps	480fps	
	Split Image		1,4,6,9	1,4,6,9,10,13	1,4,6,9,10,13,16,20	
Recording	Resolution Speed(1080p) (IP/Board)		120/120fps	120/240fps	120/480fps	
	Resolution	IP	CIF / D1 / 1.3M / 2M / 3M / 5M Support			
		Card	1920X1080, 1280X720, 960X480, D1, CIF			
	Video Recording Mode		Continuous, Motion, Continuous + Motion, Sensor + Motion			
	Back up		Manual, Schedule Backup(VIVAKO Format), AVI, JPEG			
Network	Connection		More than 1000 Base Ethernet			
	Client		MAX 5 Users			
	Protocol		Samsung, LG, Truen, Hikvision, ONVIF, RTSP camera support			
System	CPU / Memory		I7/4GB			
	O / S		Windows 7, Windwos10			

'SECURUS' Hybrid NVR Specification



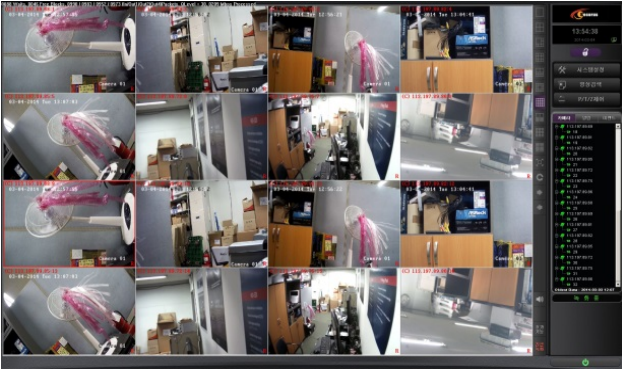
AHD TVI CVI ANALOG

Feature

- ✓ It is compatible with existing cameras
- ✓ High Performance H.264 H/W Encoding DVR board
- ✓ Scalable and flexible software for various application
- ✓ SDK is available for 3rd party integration

Classification	Sub-category		VHD-2416H	VHD-4832H	VHD-4816H	VHD-9632H	
Video	Input	Total	20CH	36CH	20CH	36CH	
		IP	4CH License for one Card (Extensible to Max.64CH-optional)				
		Card	16CH X 1 Card	16CH X 2 Cards	8CH X 2 Cards	8CH X 4 Cards	
	Output Resolution	Signal Type	AHD, TVI, CVI, CVBS				
		Monitor	VGA, DVI, HDMI(Optional) / 1920x1080				
		Spot	1x HDMI / 2x CVBS		-	-	
Compression		H.264					
Audio	Input		16CH	32CH	16CH	32CH	
	Compression		ADPCM				
	Output		PC Sound Card				
Live	Resolution (1080p)	IP	120fps				
		Card	480fps	960fps	480fps	960fps	
	Split Image		1,4,6,9,10,13,16	1,4,6 --- 20,25,36	1,4,6,9,10,13,16	1,4,6 --- 20,25,36	
Recording	Resolution Speed(1080p) (IP/Board)		120/240fps	120/480fps	120/480fps	120/960fps	
	Resolution	IP	CIF / D1 / 1.3M / 2M / 3M / 5M Support				
		Card	1920X1080, 1280X720, 960X480, D1, CIF				
	Video Recording Mode		Continuous, Motion, Continuous + Motion, Sensor + Motion				
	Back up		Manual, Schedule Backup(VIVAKO Format), AVI, JPEG				
Network	Connection		More than 1000 Base Ethernet				
	Client		MAX 5 Users				
	Protocol		Samsung, LG, Truen, Hikvision, ONVIF, RTSP camera support				
System	CPU / Memory		I7/4GB				
	O / S		Windows 7, Windwos10				

'SECURUS' Smart NVR Specification



64/48/32/24/16CH

Feature

- ✓ OnVIF Profile S Conformance Support
- ✓ High Performance H.264 Compression
- ✓ Total Monitoring System by Smart Client
- ✓ SDK is available for 3rd party integration
- ✓ Watch Dog Process for stable system

Classification		16Ch(HDi-1600)	24Ch(HDi-2400)	32Ch(HDi-3200)	48Ch(HDi-4800)	64Ch(HDi-6400)
Live Recording	Live	480FPS(D1) 480FPS(HD) 480FPS(Full HD)	720FPS(D1) 720FPS(HD) 480FPS(Full HD)	960FPS(D1) 960FPS(HD) 480FPS(Full HD)	1440FPS(D1) 960FPS(HD) 480FPS(Full HD)	1920FPS(D1) 960FPS(HD) 480FPS(Full HD)
	Split Image	1/4/6/9/10/13/16 Full Image	1/4/6/9/10/13/16 /20/25 Full Image	1/4/6/9/10/13/16 /20/25/36 Full Image	1/4/6/9/10/13/16 /20/25/36/48 Full Image	1/4/6/9/10/13/16 /20/25/36/48/64 Full Image
	Codec	H.264				
	Recording	480FPS(Full HD)	720FPS(Full HD)	960FPS(Full HD)	1440FPS(Full HD)	1920FPS(Full HD)
	Recording Mode	Continuous, Motion, Motion + Sensor, Event, Emergency recording				
System	CPU	Intel I7				
	OS	Win 7 Pro 64Bit				
	RAM	4GB				
	HDD/SSD	HDD 3TB / 8 Bay / SSD 120GB				
Network	Interface	10/100/1000 Base Ethernet				
	Protocol	Onvif, RTSP Camera				
	Client	MAX 5 Users				
Functions	Audio	Two-Way Audio, Broadcast				
	PTZ	Support				
	E-Map	By Client software				
	Multi-monitor	By Client software - Max 4 Monitor				
	I/O	According to Channel				
	스마트폰	i-Phone, Android				

'SECURUS' Video Capture Card

Various Application

- ✓ EX-SDI, HD-SDI, AHD, TVI, CVI, CVBS Signal
- ✓ Resolution Selectable
- ✓ Multi Card supported
- ✓ Applicable for Security, Medical Device, Sports equipment etc.

User Convenient Software

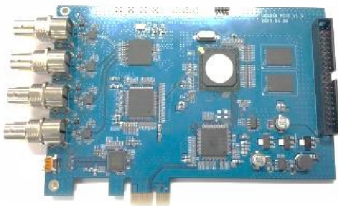
- ✓ It is compatible with any existing cameras
- ✓ Scalable and flexible software for various application
- ✓ SDK is available for 3rd party integration

Good Compatibility With a PC

- ✓ Windows XP/7/8/10, Linux
- ✓ 64bit/32bit
- ✓ Intel/AMD

ALL Hybrid

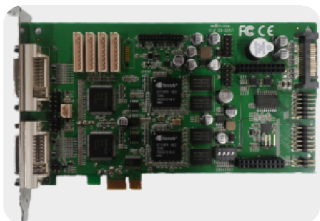
EX-SDI, HD-SDI, AHD, TVI, CVI, CVBS



- . Video Input : 4CH
(4 multi boards can be built in a PC - Max. 16CH)
- . Compatible Format : EX-SDI, HD-SDI, AHD, TVI, CVI, CVBS
- . Resolution : 1080p, 720p, D1, CIF
- . Live display : 120fps
- . Recording : 120fps(Hardware Encoding)
- . Dual Stream : Full HD, D1
- . Capture : Low Data 120fps
- . Voice Recording : 4CH
- . TV Spot Out : 1x HDMI. 2x CVBS

Hybrid

AHD, TVI, CVI, CVBS



- . Video Input : 16CH
(4 multi boards can be built in a PC - Max. 64CH)
- . Compatible Format : AHD, TVI, CVI, CVBS
- . Resolution : 1080p, 720p, D1, CIF
- . Live display : 480fps
- . Recording : 240fps(Hardware Encoding)
- . Dual Stream : Full HD, D1
- . Capture : Low Data 480fps
- . Voice Recording : 16CH
- . TV Spot Out : 2x CVBS

Hybrid 4CH DVR MONITOR

SHD-5504BL

- Built in 10" LCD with HD Display
- LCD Screen with 1280x1024 resolution
- All in one modulation -
- Analog/Hybrid/Network
- Support HDMI, VGA Output
- Easy Back-up: USB Device, Network
- Cloud remote view by mobile
- Password Protection



Specifications

Codec	H.264 (High Profile)
Video Input(BNC)	4x 1080N / 4x AHD-M
Multi Input	Analog: 4x 1080N, 4x AHD-M, 4x AHD-L, Hybrid: 2x AHD-M(Analog) + 2x720P(N/W) Network Only: 4x 720p, 4x 1080p
Audio In / Out	4 In/ 1 Out ,G.711A (Intercom Support)
Recording Mode	Manual, Alarm, Motion Detection, Timing
Playback	Search by time, calendar, event, channel
Storage	HDD, Network
Back Up	Network, USB Hard Disk, USB Burnet, SATA Burner
Interface	4CH BNC, Video In: 1ch VGA, 1CH HDMI, N/W: RJ45 10M/100M self-adaption PTZ Control: 1x RS485, USB: 3x USB 2.0 , HDD: 1x SATA(Max 4TB)
Power	Power adaptor: 12V/3A, Power Consumption: Max. 15W(W/O HDD)
Size & Weight	250mm(L)x240mm(W)x46mm(H) / 2.5KG(W/O HDD)
Working Temp.	0°C —+55 °C ,Humidity:10%—90%,



Model		AT-0405R	AT-0402R	AT-0815R	AT-1623R	
Description		AHD & HD-TVI Hybrid DVR				
Video	Input	Number of Channels	4	4	8	16
		CCTV Camera Types	SD, Analog HD (NRT)			
	Output	Main Monitor	VGA / HDMI (Max. 1080p)	VGA / HDMI (Max. 1080p)	VGA / HDMI (Max. 1080p)	VGA / HDMI (Max. 4K)
		Sub Monitor	N/A	CVBS or SPOT (Selective)		
		Loop Output	N/A			
Audio	Local Input / Output		4 / 1	4/1	4 / 1	4 / 1
	IP Camera Input / Output		N/A			
	Codec		G.711			
	2-way audio		Local Audio ↔ Network Client			
Alarm	Local Input / Output		4 / 1	4/1	4 / 1	4 / 1
	IP Camera Input / Output		N/A			
PTZ	RS-485		1			
Recording	Codec		H.264 (High Profile L4.2)			
		4MP	N/A	10fps / channel	10fps / channel	12fps / channel
		3MP	N/A	12fps / channel	12fps / channel	12fps / channel
		2MP	12fps / channel	12fps / channel	12fps / channel	12fps / channel
		1MP	25fps / channel	25fps / channel	25fps / channel	25fps / channel
		960H	25fps / channel	25fps / channel	25fps / channel	25fps / channel
	Recording Mode		Continuous / Smart / Motion / Sensor / Schedule / Manual			
Pre-recording		Max. 20 Minutes				
Post-recording		Max. 60 Seconds				
Search & Playback	Search		Panorama, Motion, Specific Date/Time, Event, Archive, Log			
	Multi-Decoding		1, 4	1, 4	1, 4, 9, 1+7	1, 4, 9, 16
	Playback Speed		x0.25, x0.5, x2, x4, x8, x16, x32, x64			
Backup	Media		USB drive, External HDD, Network			
	Format		BMP, AVI, EXE(Player+Data), NSF(Proprietary Format)			
	Huge Backup		Max. 24 hours			
Storage	HDD	1 HDD	6TB			
		Internal HDDs	1EA	1EA	1EA	1EA
		e-SATA	N/A	N/A	N/A	NA
		Extension	N/A	N/A	N/A	N/A
	USB	Front	1			
Rear		1				
User I/F	Input Method		IR, Mouse, Keyboard Controller			
Network	Interface		10/100Base-TX	10/100Base-TX	10/100/1000Base-TX	10/100/1000Base-TX
	Dynamic DNS		Free DDNS			
	Dual Encoding for Network		Max. 640x360			
Features	Digital Zoom		Live and Playback, Free Size			
	DST		EU and USA			
	NTP		Once, Time and Periodic			
	S.M.A.R.T		Temperature, Power On Time, Bad Sectors and Health			
	Multi-Language		Support			
	Cooling FAN Monitoring		Support			
	System Event Notification		Health, Restart, Shutdown, Panic, Alarm, Motion, HDD, FAN → Alarm, Beep and e-Mail			
Network Access	3G/4G Mobile		iPad / iPhone / Android			
	Web Viewer		Windows (IE, Chrome, Firefox, Safari)			
	PC Client		Single / Multi Client and CMS (64 channels)			
	Remote Setup and Upgrade		Simple Web Setup and Upgrade			
Temperature	Operation		5°C ~ 40°C			
	Storage		-10°C ~ 50°C			
Humidity	Operation		20% ~ 80% (Non-condensing)			
Certificate	3rd Party Agency		KC, CE, FCC			
Others	Dimension (W x D x H)		300mm x 252mm x 53mm (11.8' x 9.9' x 2.0')			
	Power		DC 12V 2A	DC 12V 3A	DC 12V 3A	DC 12V 3A

*Design and specifications are subject to change without notice.



Model		AT-0413M	AT-0823M	AT-1643M	
Description		All-in-One Premium DVR			
Video	Input	Number of Channels	4	8	16
		CCTV Camera Types	960H, Analog HD (AHD & TVI 1/2/4/8MP)		
		IP Camera (H.264 only)	Max. 8MP		
	Output	Main Monitor	VGA / HDMI (Max. 4K)	VGA / HDMI (Max. 4K)	VGA / HDMI (Max. 4K)
		Sub Monitor	CVBS or SPOT (Selectable on Menu))		
Loop Output		4	8	16	
Audio	Local Input / Output		4 / 1	8 / 1	16 / 1
	2-way audio		Local Audio ↔ Network Client or Local Audio ↔ IP Camera		
Alarm	Local Input / Output		4 / 1	8 / 1	16 / 4
	IP Camera Input / Output		4 / 4	8 / 8	16 / 16
PTZ	RS-485		1		
Recording	Codec		H.264 (High Profile L4.2)		
	Camera Resolution	8MP	12fps / channel	10fps / channel	Ch1~8 (8M 15fps / Ch), Ch9~16 (4M 15fps / Ch)
		4MP	25fps / channel	20fps / channel	25fps / channel
		2MP	25fps / channel	25fps / channel	25fps / channel
		1MP	25fps / channel	25fps / channel	25fps / channel
		960H	25fps / channel	25fps / channel	25fps / channel
	Recording Mode		Continuous / Smart / Motion / Sensor / Schedule / Manual		
Pre-recording		Max. 20 Minutes			
Post-recording		Max. 60 Seconds			
Search & Playback	Search		Panorama, Motion, Specific Date/Time, Event, Archive, Log		
	Multi-Decoding		1, 4	1, 4, 9, 1+7	1, 4, 9, 16
	Playback Speed		x0.25, x0.5, x2, x4, x8, x16, x32, x64		
Backup	Media		USB Drive, External HDD, Network		
	Format		BMP, AVI, EXE(Player+Data), NSF(Proprietary Format)		
	Huge Backup		Max. 24 hours		
Storage	HDD	Capacity of 1 HDD	8TB		
		Internal HDDs	Max. 4EA (RAID1/10)		
		e-SATA	1 (For Storage Extension)		
		Extension	External DAS (Max. 32TB, RAID)		
	USB	Front	1		
Rear		2			
User I/F	Input Method		IR, Mouse, Keyboard Controller, Keypad		
Network	Interface		10/100/1000Base-TX x 2		
	Dynamic DNS		Free DDNS		
	Dual Encoding for Network		Max. 640x360		
Features	Digital Zoom		Live and Playback, Free Size		
	NTP		Once, Time and Periodic		
	S.M.A.R.T		Temperature, Power On Time, Bad Sectors and Health		
	Cooling FAN Monitoring		Support		
	System Event Notification		Health, Restart, Shutdown, Panic, Alarm, Motion, HDD, FAN → Alarm, Beep and e-Mail		
Network Access	3G/4G Mobile		iPad / iPhone / Android		
	Web Viewer		Windows (IE, Chrome, Firefox, Safari)		
	PC Client		Single / Multi Client and CMS (64 channels)		
	Remote Setup and Upgrade		Simple Web Setup and Upgrade		
Temperature	Operation		5°C ~ 40°C		
	Storage		-10°C ~ 50°C		
Humidity	Operation		20% ~ 80% (Non-condensing)		
Dimension (W x D x H)		380mm x 340mm x 72mm (15.0' x 13.4' x 2.8')			
Power		DC 12V 5A	DC 12V 5A	DC 12V 6.67A	

*Specification is subject to change without notice.